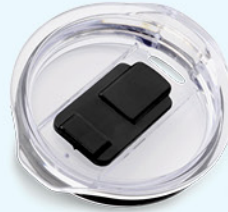


AUSTIN VACUUM TUMBLER

*R: ATT-14|ATT-18|ATT-22 C: ATTC14|ATTC18|ATTC22

- Double Wall Stainless
- Vacuum Insulated Stainless Steel
- Stays 4 Hours Hot 12 Hours Cold
- *Cork(C) & Rubber(R) Bases Available

NEW



Push-On
High Profile Slider



22oz



14oz



18oz



22oz



FULL COLOR
WRAP OR LOGO



AIR TRANSFER
FULL COLOR
WRAP

3D

FULL COLOR
WRAP OR LOGO

